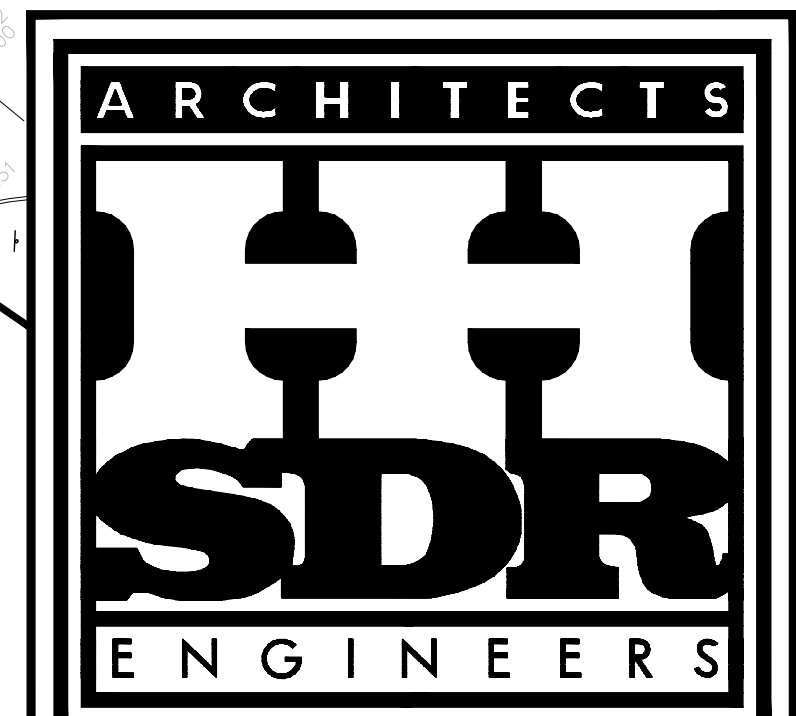


REVISIONS	
△	02/08/10 REVISION DRAWING

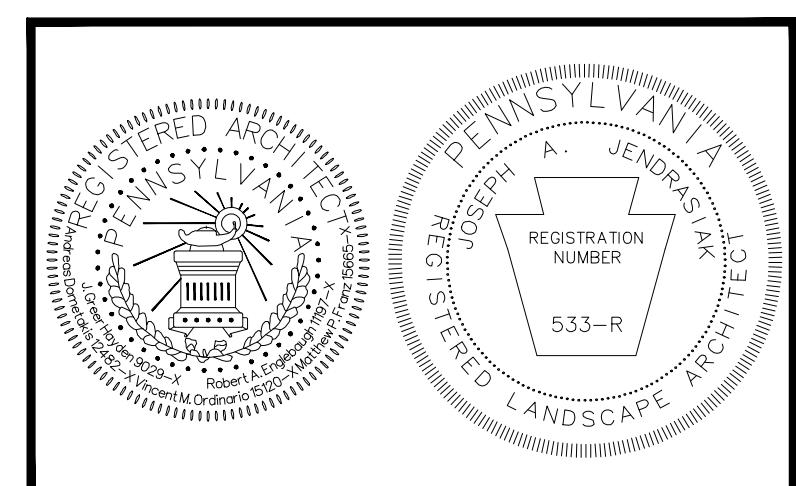
NOTES

NOTE: ALL NEW SANITARY LINE LOCATIONS FROM THE SUMMER 2009 SEWER PROJECT (COMPLETED BY THE CITY OF SHARON) ARE SHOWN APPROXIMATELY ON ALL SHEETS. THE NEW SANITARY LINES WERE TAKEN FROM AS-BUILT DRAWINGS BY MS CONSULTANTS, INC. OF PITTSBURGH, PA ON 1/14/10. ALL UTILITIES SHALL BE VERIFIED IN FIELD PRIOR TO CONSTRUCTION.

NOTE: "THIS PROJECT WAS FINANCED IN PART BY A GRANT FROM THE COMMUNITY CONSERVATION PARTNERSHIPS PROGRAM, KEYSTONE RECREATION, PARK AND CONSERVATION FUND, UNDER THE ADMINISTRATION OF THE PENNSYLVANIA DEPARTMENT OF CONSERVATION AND NATURAL RESOURCES, BUREAU OF RECREATION AND CONSERVATION."



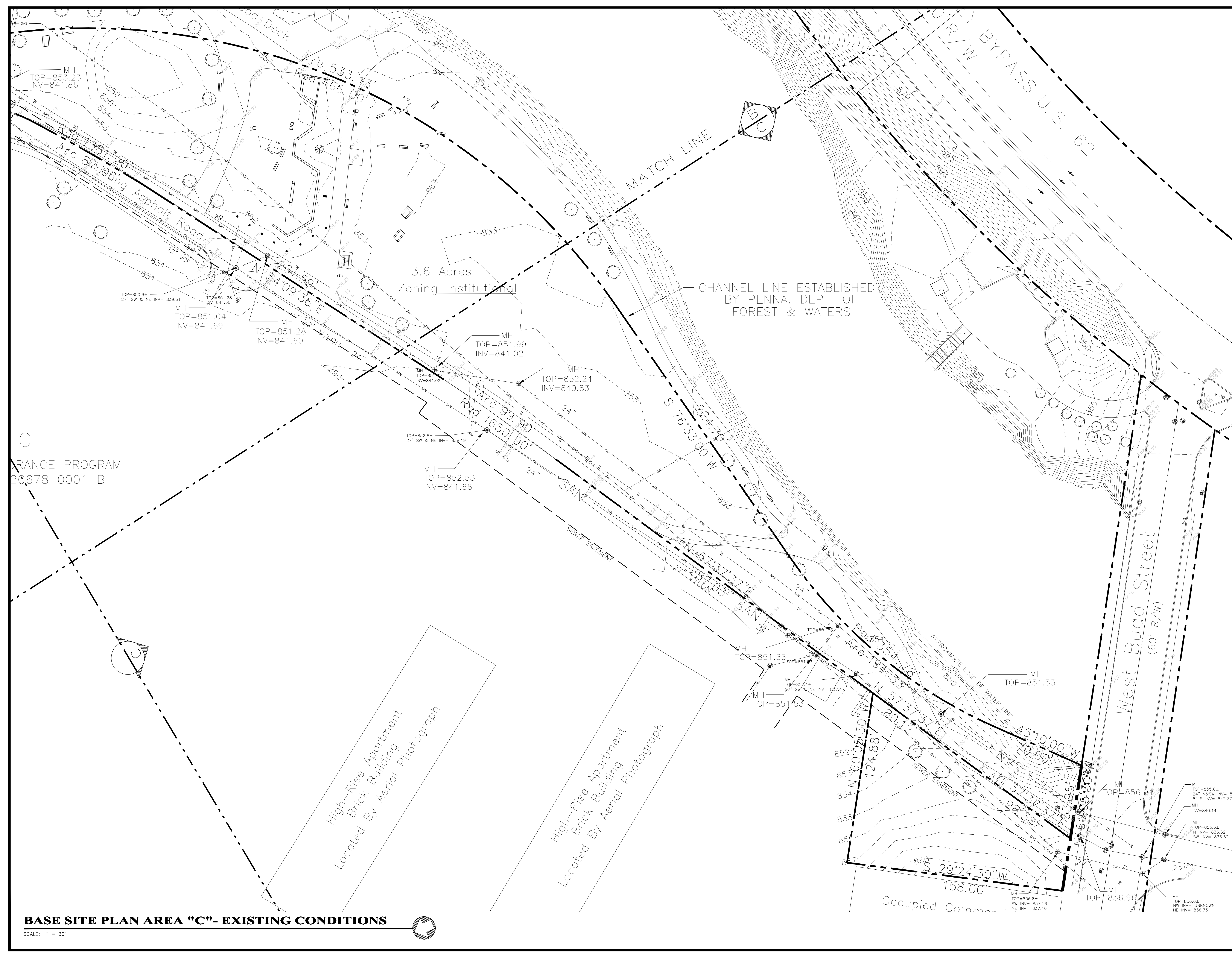
40 SHENANGO AVE., SHARON, PA 16146 • (724) 981-8200
130 SEVENTH ST., PITTSBURGH, PA 15222 • (412) 281-2200



RENOVATIONS TO THE BICENTENNIAL PARK
WEST CONNELLY BLVD. AND SOUTH WATER STREET
SHARON, PA 16146
FOR THE
CITY OF SHARON
155 WEST CONNELLY BLVD.
SHARON, PA 16146

BASE SITE PLAN AREA "C" - EXISTING CONDITIONS

COMM. NO. 3520	SHEET NO. SP-1.8 (REVISED)
DATE 01/31/09	



BASE SITE PLAN AREA "C" - EXISTING CONDITIONS

SCALE: 1" = 30'

C:\Autocad Drawings\ACTIVE_FILES\3520-Bicentennial Park\Const Doc\Revisions\3520-baseSheet-SP1.SP2.SP3.dwg, 2/11/2010 7:37:52 AM, Copyright, HHSDR Architects / Engineers

PERMITS PROGRAM
20678 0001 B